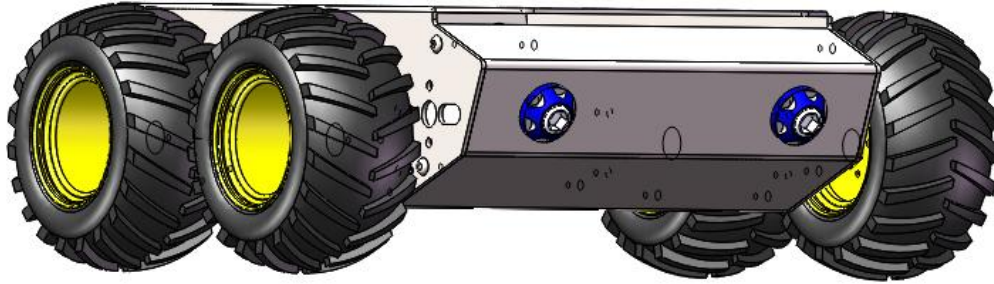


Keenlon Iron Man-2 Indoor 4WD

Installation Guide Revision 1.0



Safety first! Wear eye protection and never touch a powered robot!

Warning! Chassis is made of stainless steel with sharp edges, be careful!

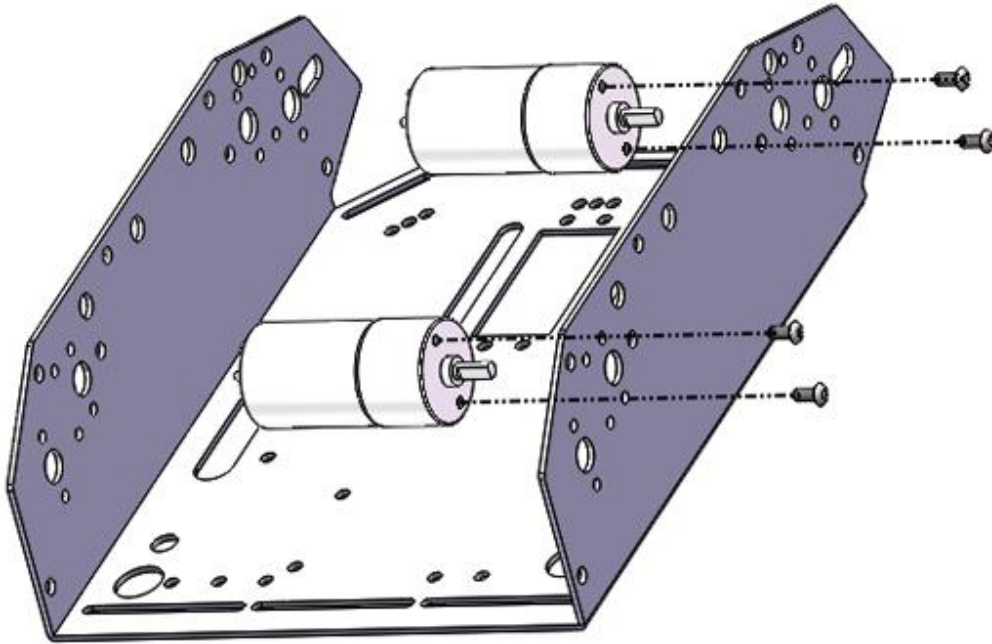
Design & Executive Shanghai Keenlon Hi-Tech Co., Ltd.

Service Techsupport@keenlon.com

Website www.keenlon.com

STEP 1A (2X)

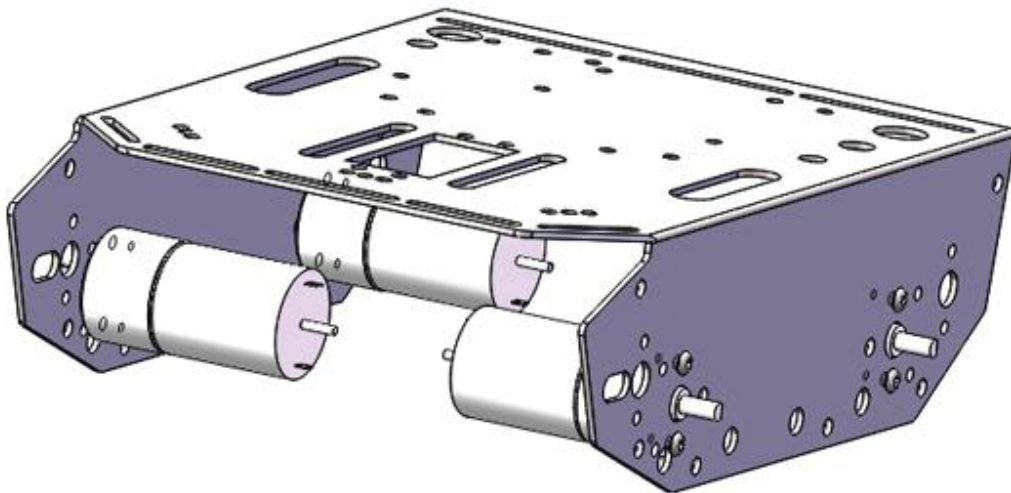
Gear motor



(2X) Gear motor ①

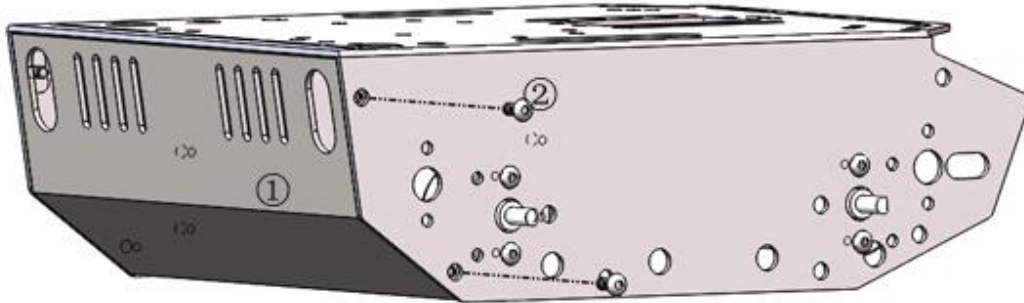
(4X)M3*6mm hex screws ②

STEP 1B



STEP 2A(2X)

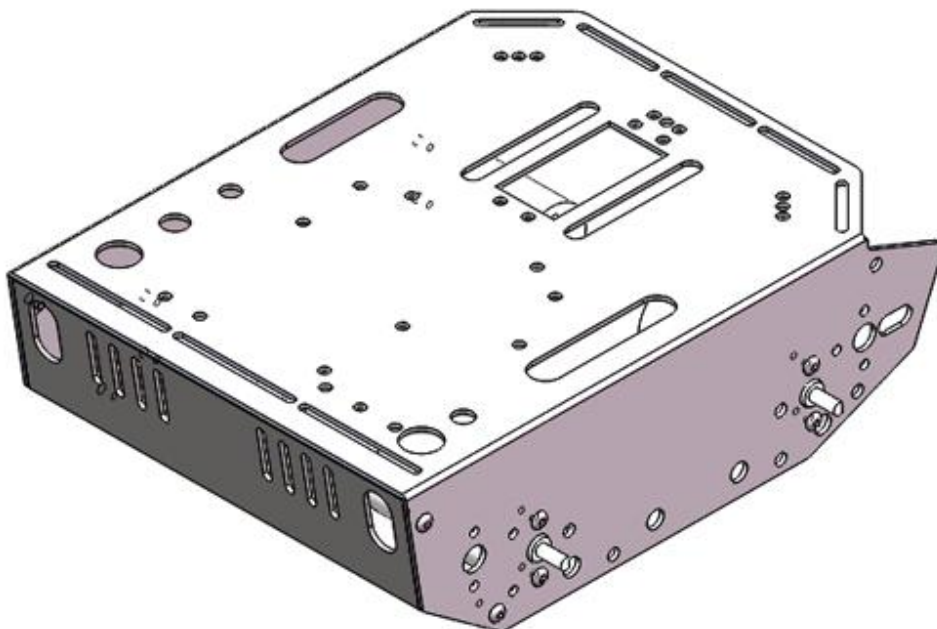
Black cover



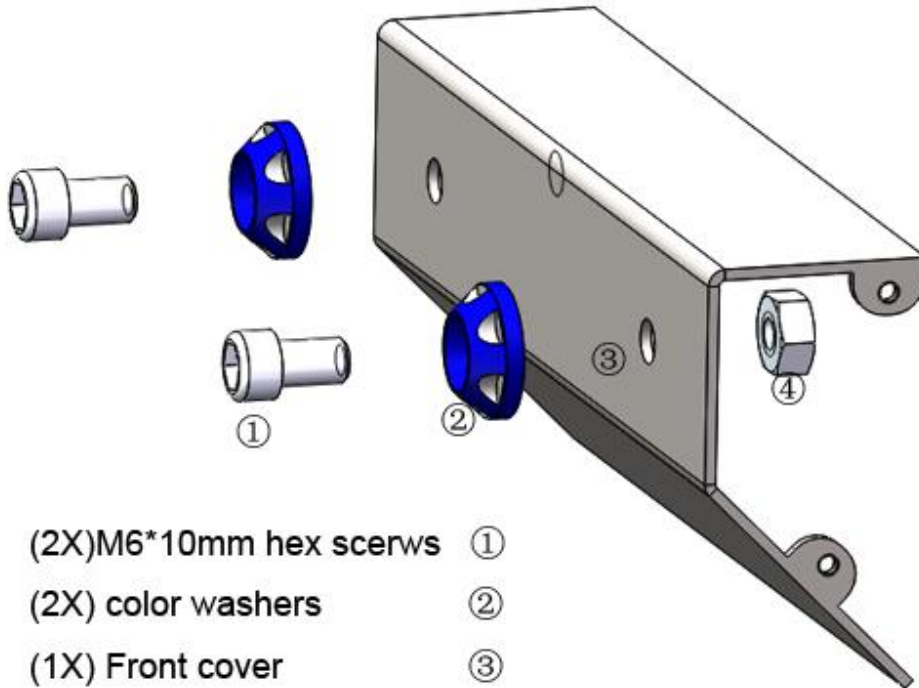
(1X) Black cover ①

(2X) M3*6mm hex screws ②

STEP 2B

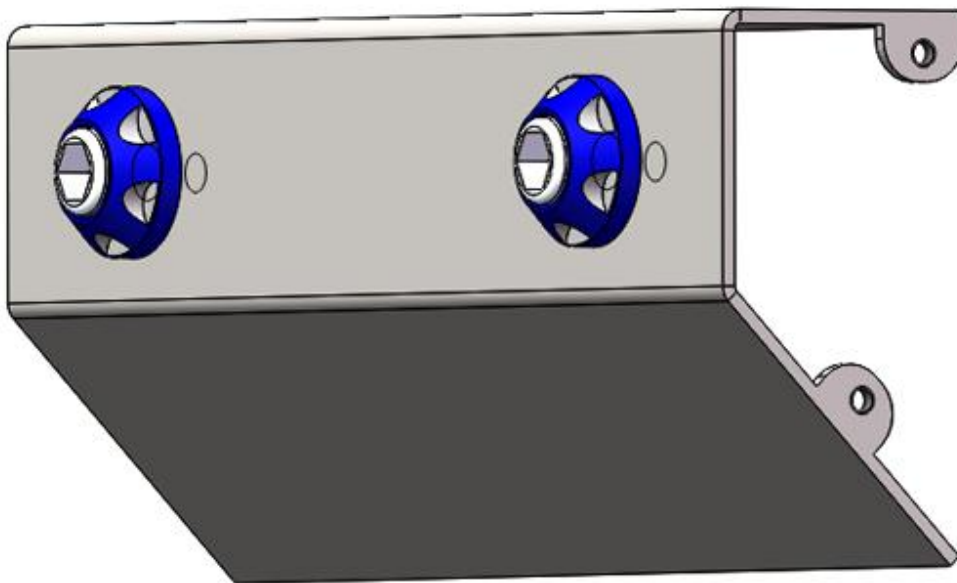


STEP 3A



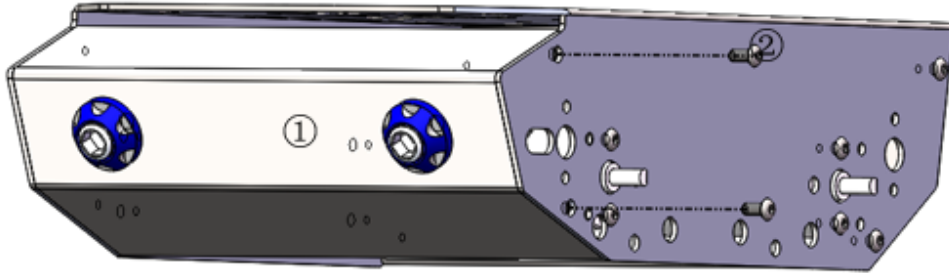
- (2X) M6*10mm hex screws ①
- (2X) color washers ②
- (1X) Front cover ③
- (2X) M6 lock nuts ④

STEP 3B



STEP 4A (2X)

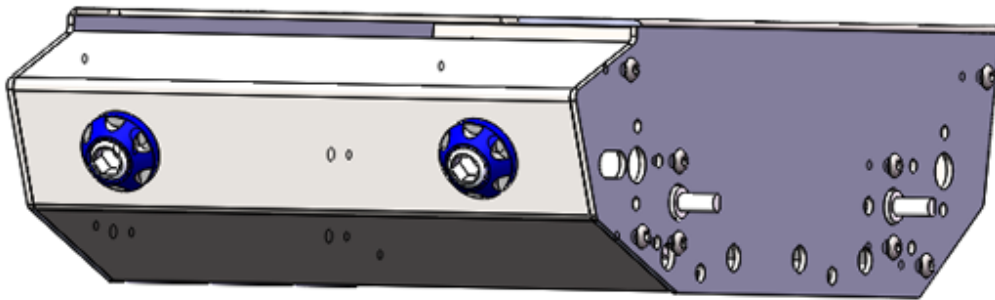
Front cover



(1X) Front cover ①

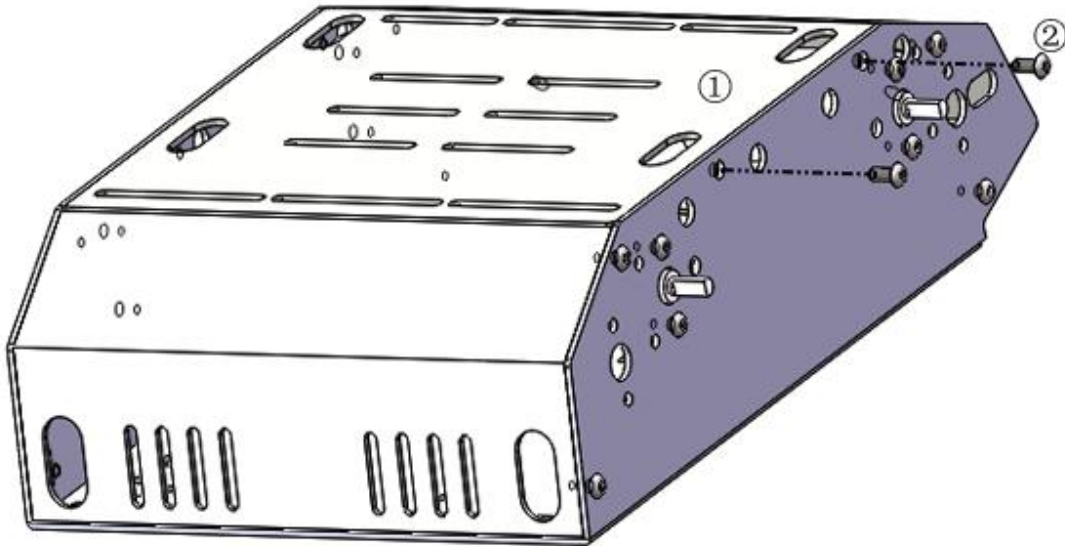
(2x) M3*6mm hex screws ②

STEP 4B



STEP 5A (2X)

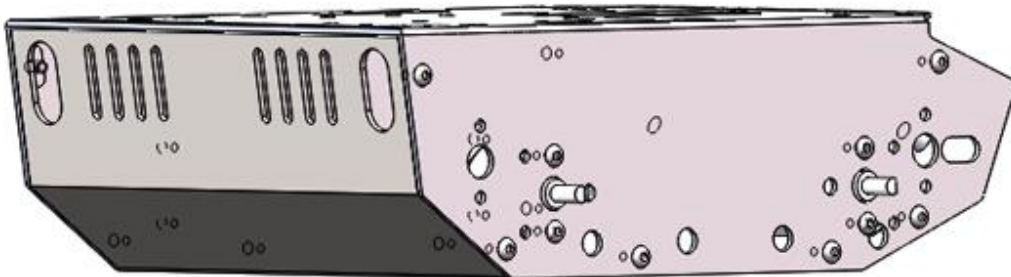
Bottom cover



(1x) Bottom cover ①

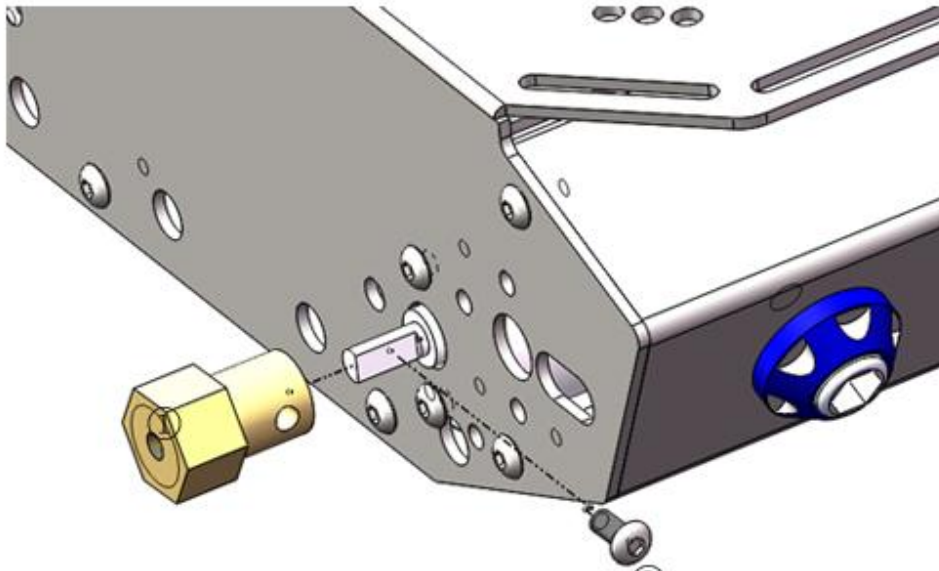
(2x) M3*6mm hex screws ②

STEP 5B



STEP 6A (4X)

Motor hubs



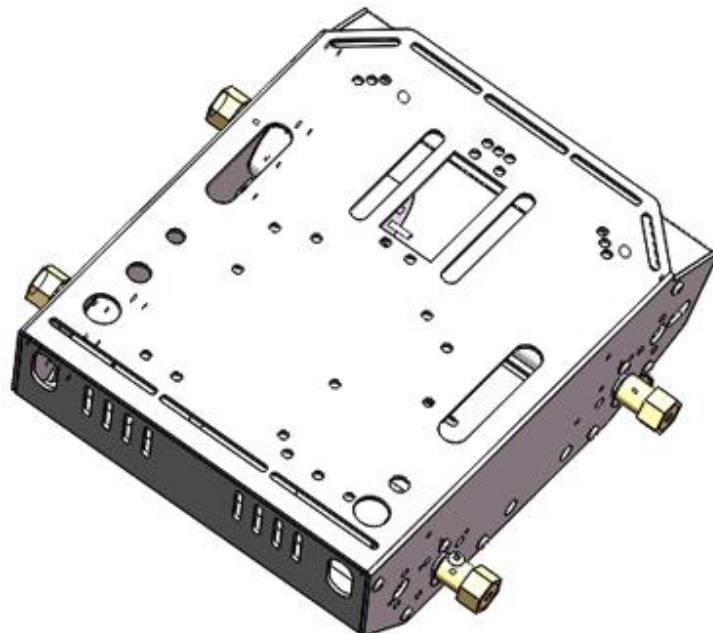
(1X) Motor hub

①

②

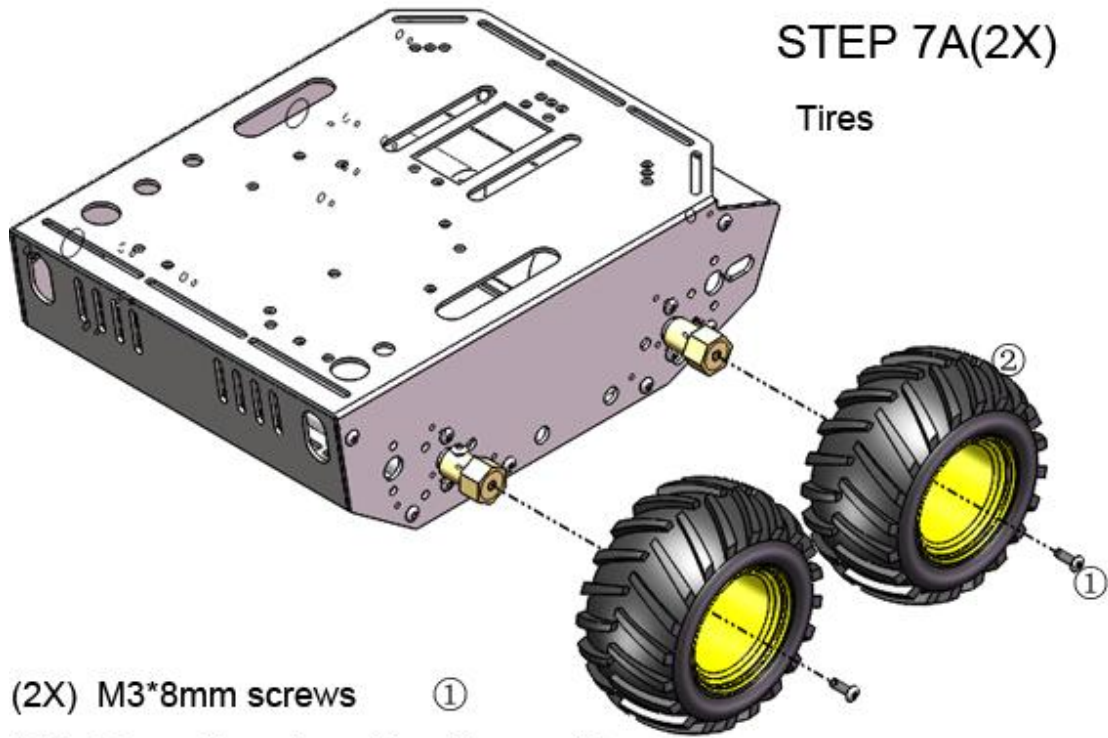
(1X) M3*6mm hex screws

②



STEP 7A(2X)

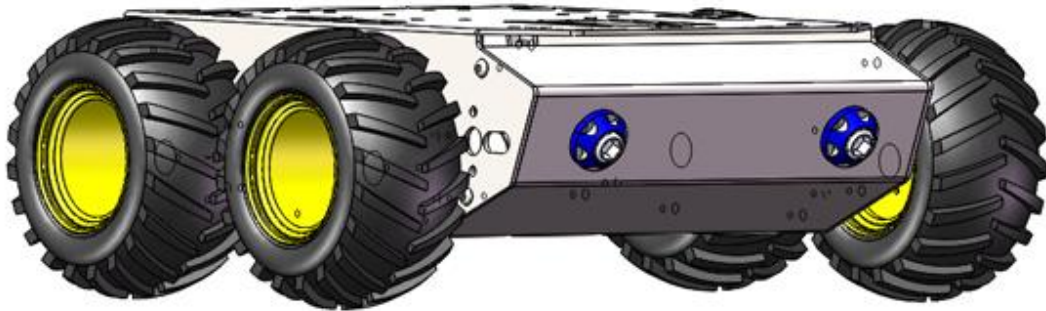
Tires



(2X) M3*8mm screws ①

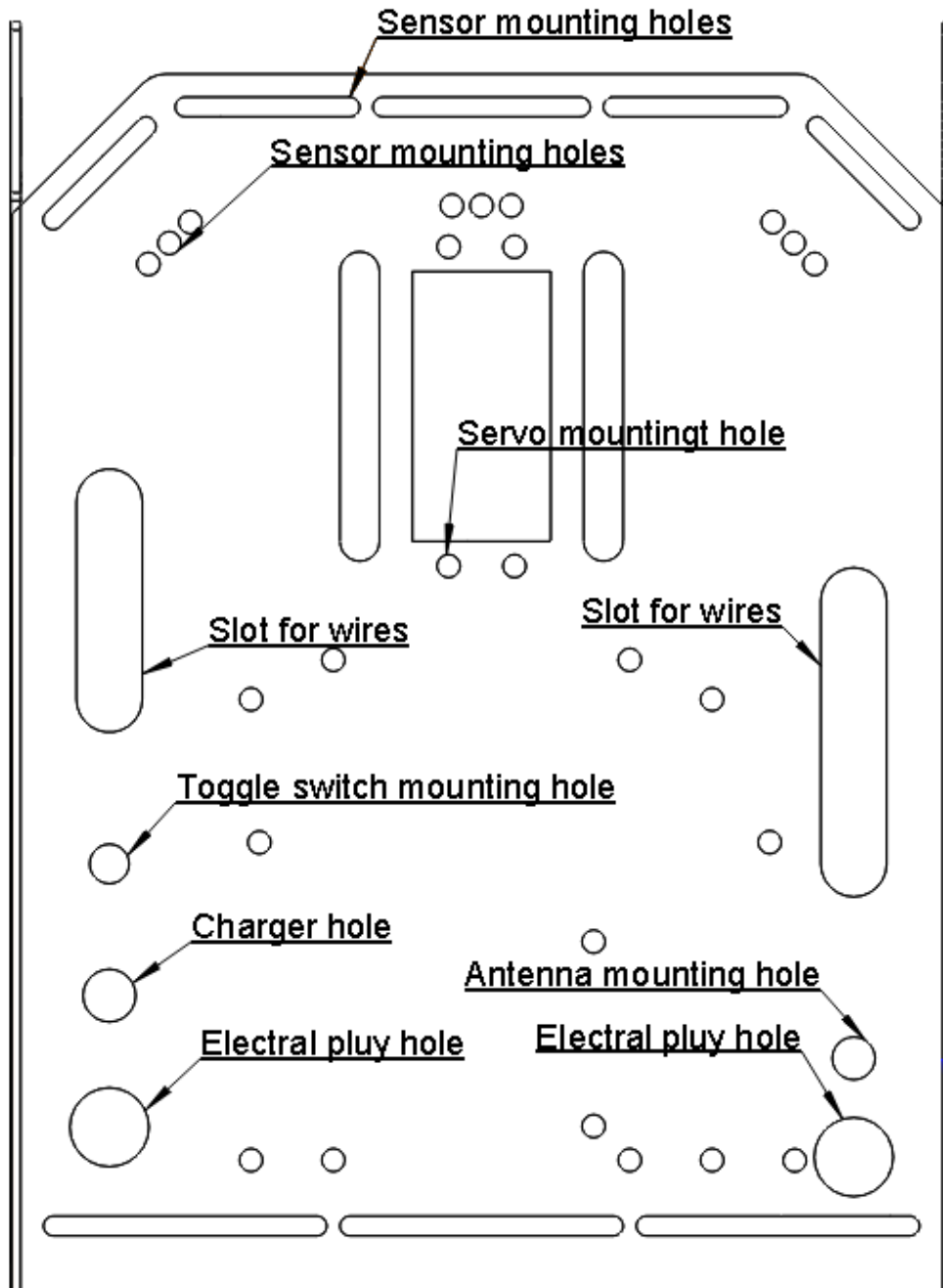
(2X) 80mm diameter rubber tires ②

STEP 7B

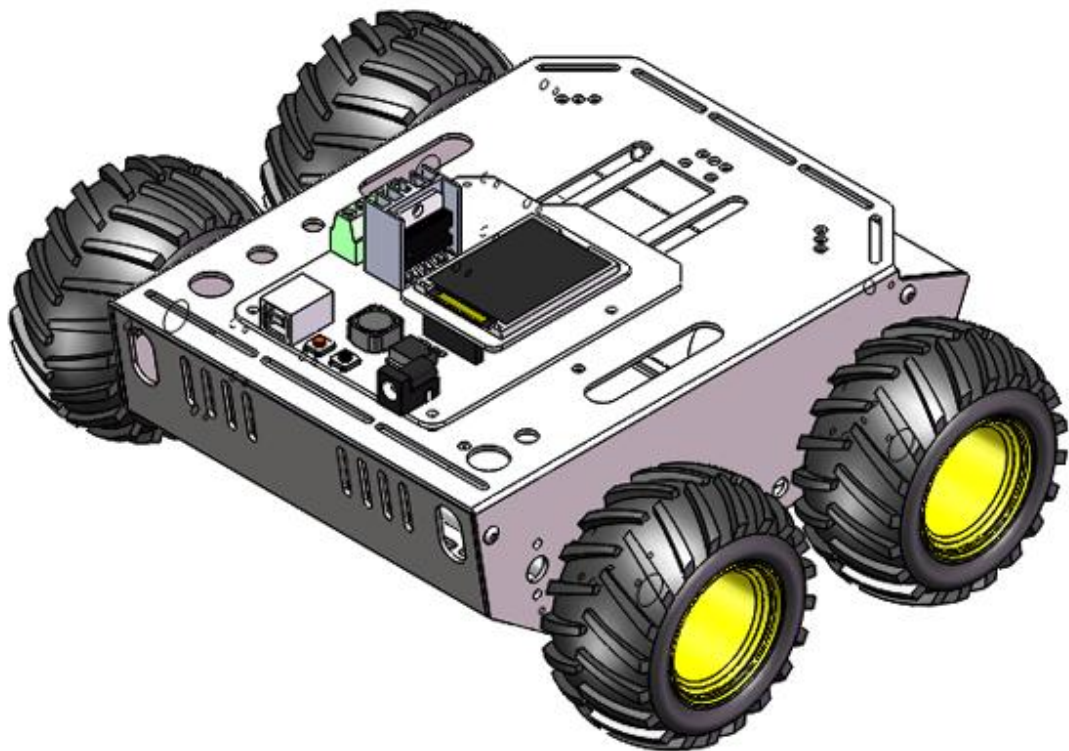
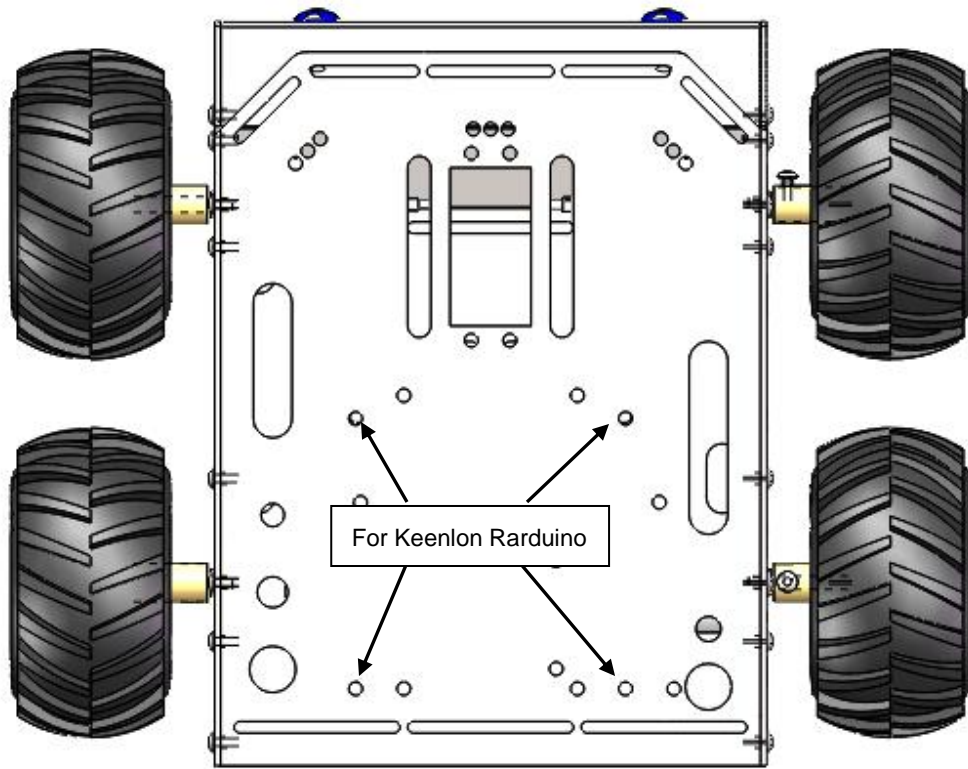


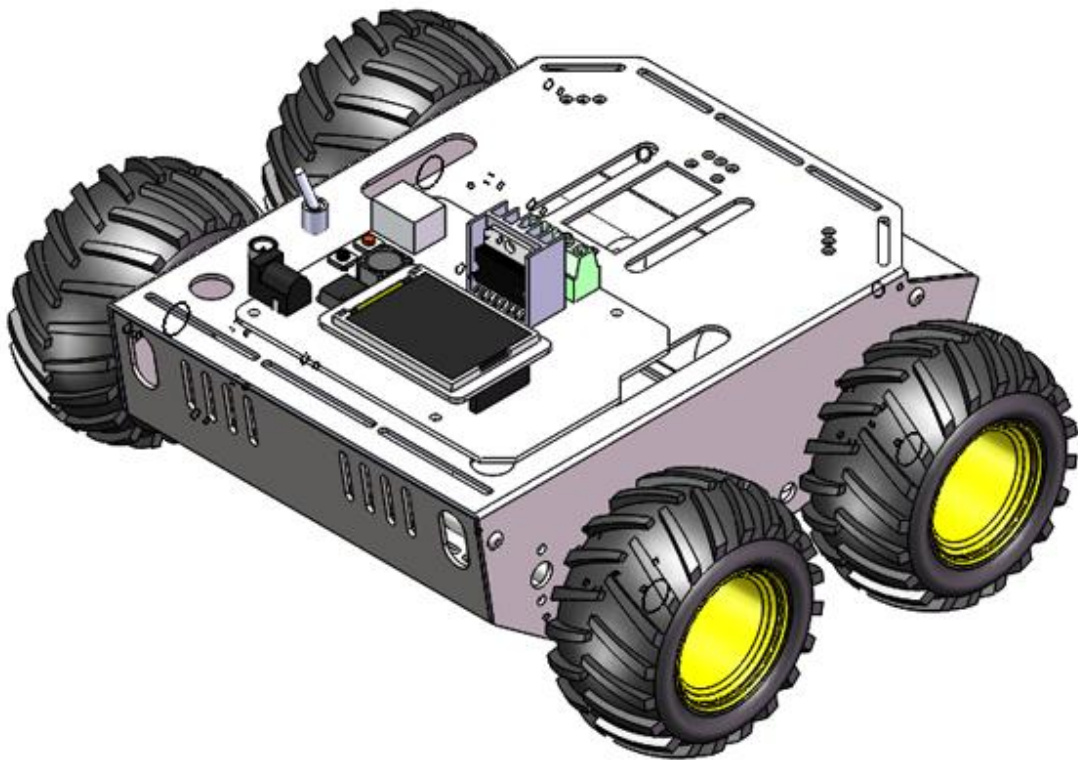
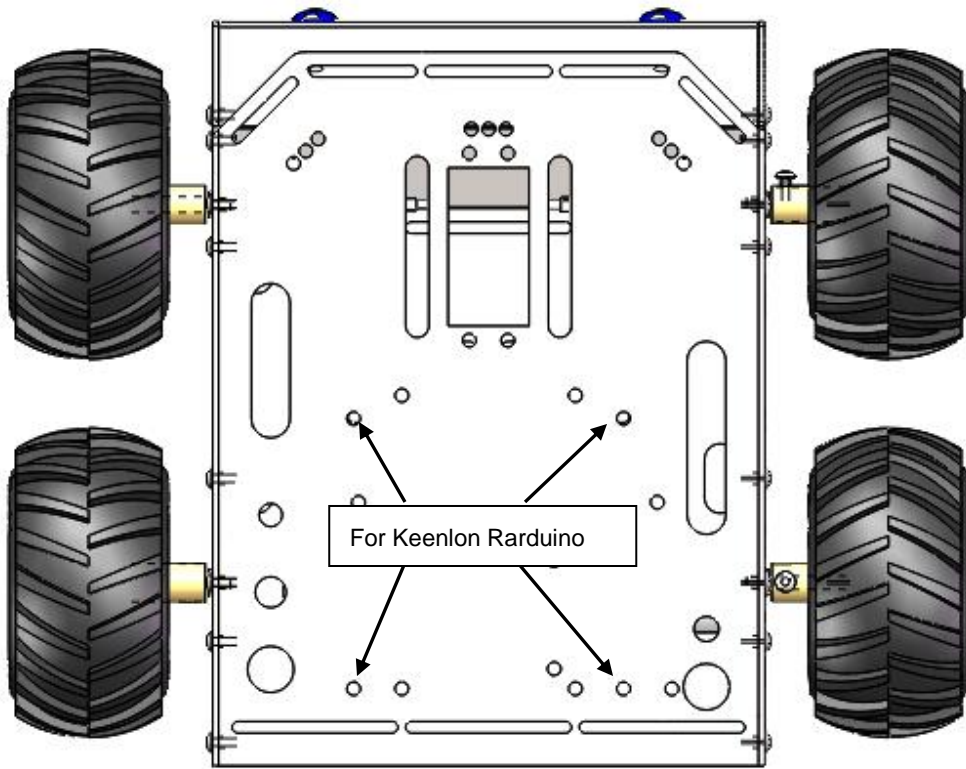
Complete

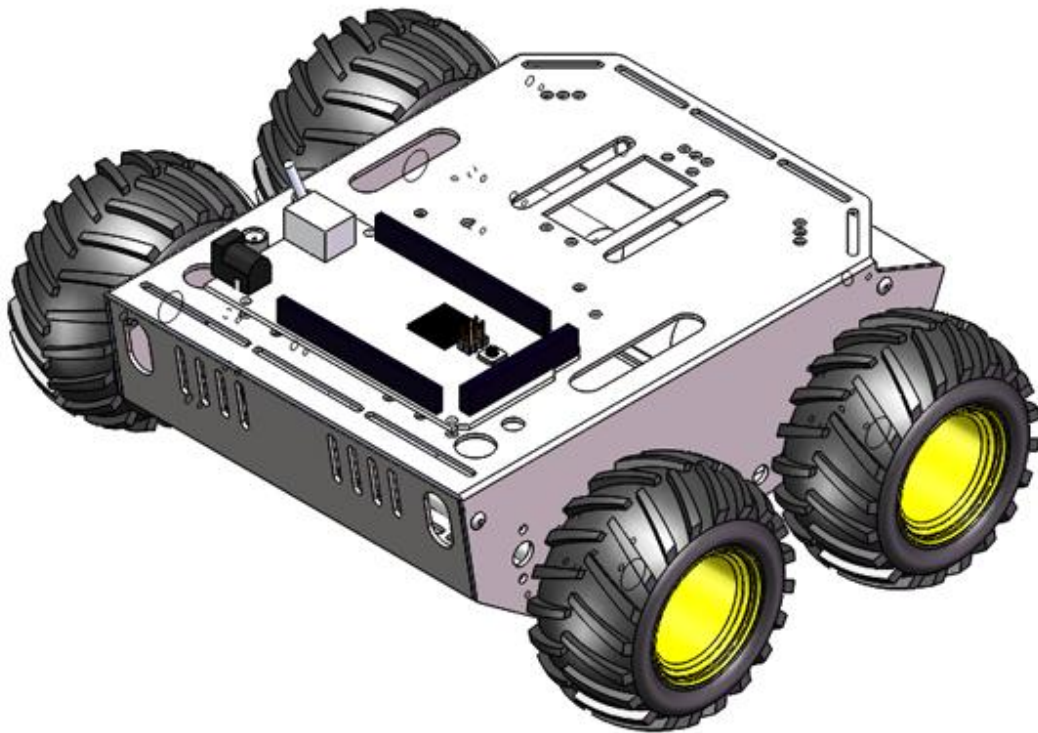
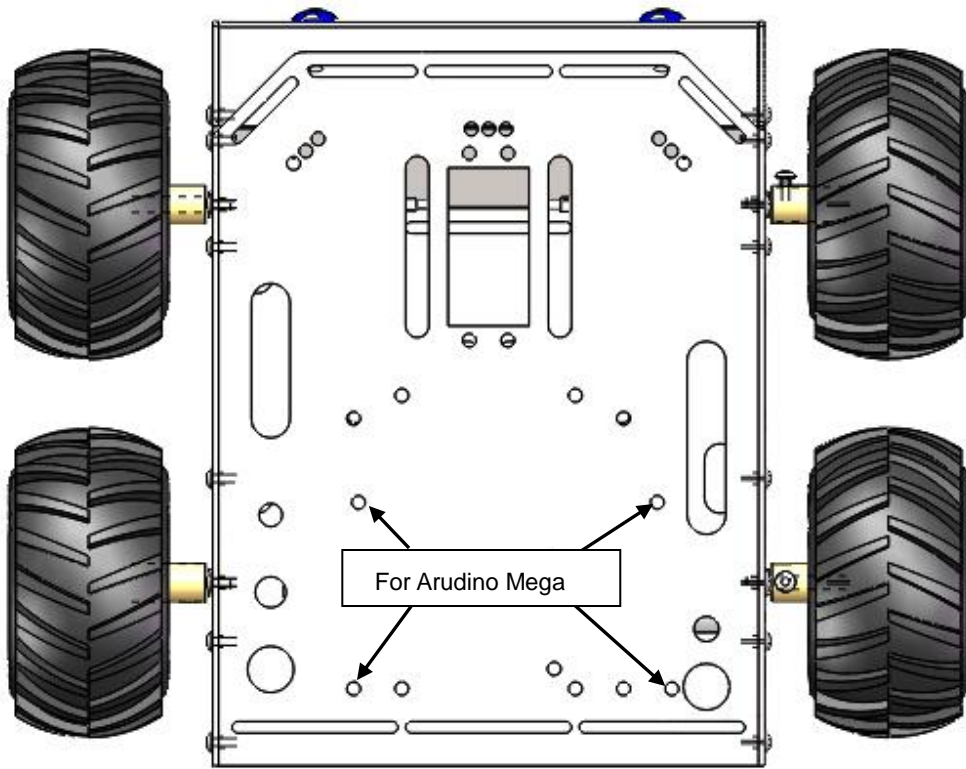
Electronic Devices Setup Guide

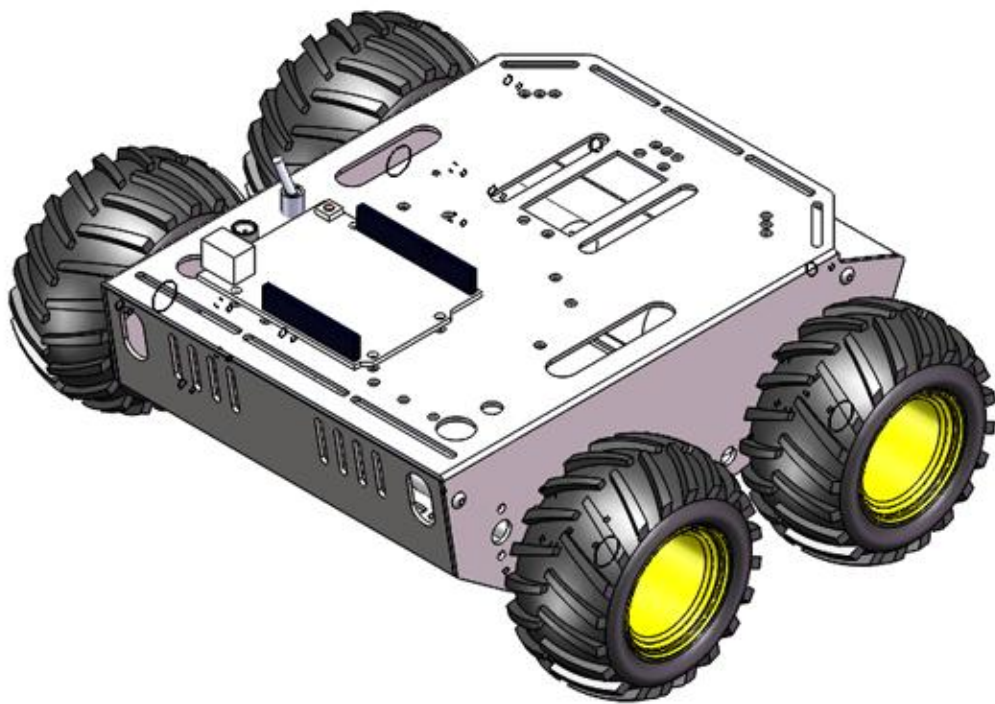
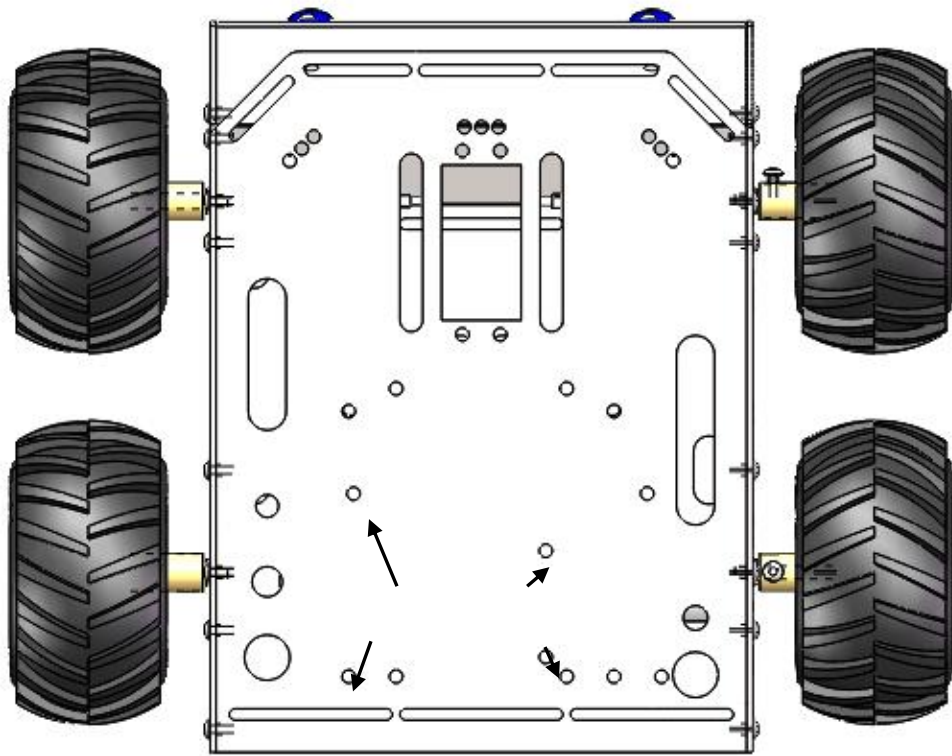


HOLES

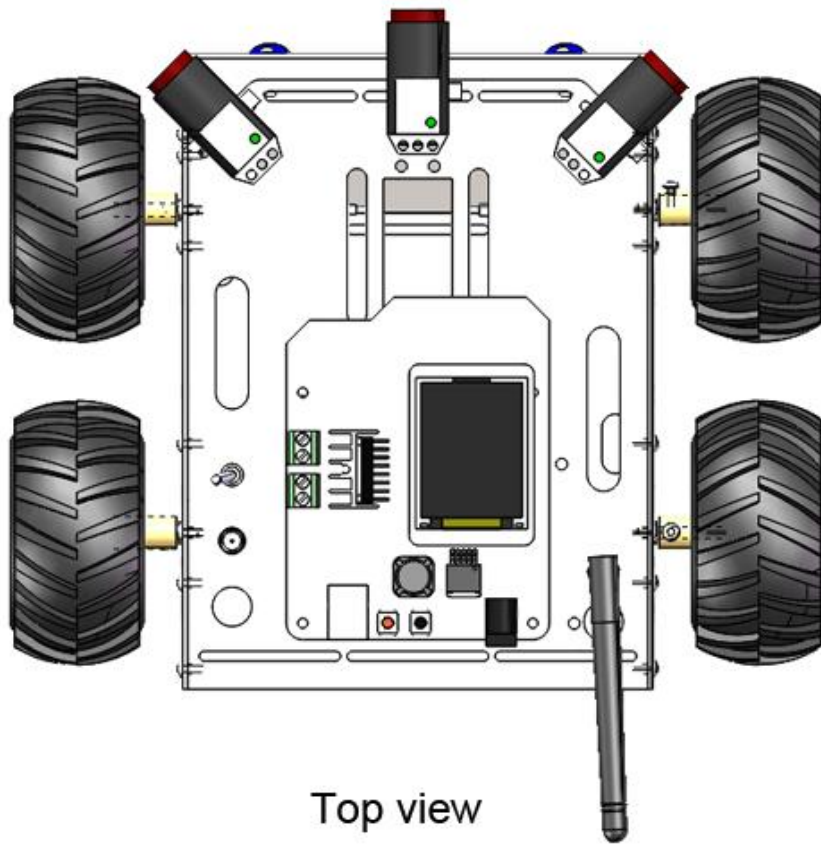
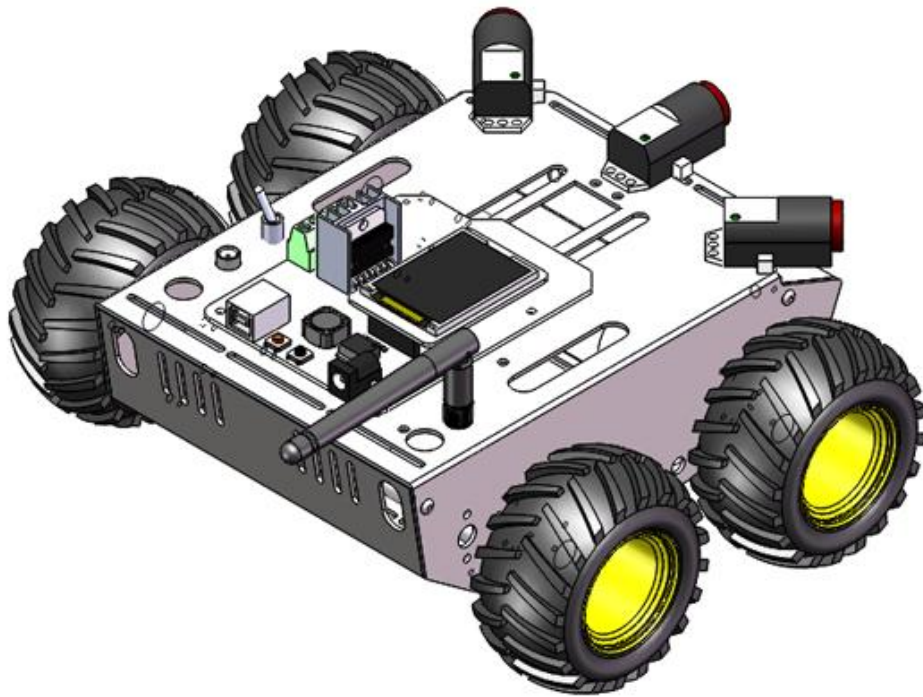








demo



Top view

